



Machine Learning for Event Reconstruction at the EIC

MITACS Globalink Research Internship — Summer 2025

Tomas Sosa

Supervisor: Prof. Dr. Wouter Deconinck

University of Manitoba

August 27, 2025

Outline

1. Big Picture
2. Introduction
3. Motivation
4. Detector Context
5. ML Approach
6. E/p Preselection
7. CNN Classifier
8. Results
9. Next Steps
10. Expected Impact
11. Scientific Output
12. Recommendations
13. Conclusions
14. References

What Are We Trying to Do—and Why?

- The Electron–Ion Collider (EIC) smashes electrons into atomic nuclei to unlock the secrets of visible matter.
- To see “what happened” in each collision, we build ultra-precise detectors that record trillions of tiny flashes of energy.
- Our challenge: pick out electrons from a forest of other particles in real time—think of finding a single firefly in a fireworks display.
- We combine:
 - A simple physics rule (E/p) to throw away the easiest “wrong” events, and
 - A modern AI (a Convolutional Neural Network) to spot the subtle shapes of an electron’s light showers.
- Result: a powerful, production-ready tool that helps every analysis at the EIC see electrons more cleanly—and push the frontier of nuclear physics.

How This Fits Into the EIC Ecosystem

- **ePIC detector:** our Barrel Imaging Calorimeter is one of the first eyes on collisions, and accurate electron ID is its lifeblood.
- **Software synergy:** this ML module slots into the EICrecon framework, alongside tracking, triggering, and data-quality tools.
- **Physics payoff:** cleaner electron samples mean sharper measurements of proton spin, internal quark motions, and the emergence of mass.
- **Sustainability:** automated training and reproducible pipelines ensure that as the detector evolves, our AI will adapt.

Introduction

- The Electron-Ion Collider (EIC) is a next-generation facility for nuclear physics.
- ePIC is the first detector to be built at the EIC.
- Canada plays a leading role in software and computing via the EIC Canada collaboration.
- This project is hosted by the University of Manitoba as part of the MITACS Globalink program.

Goal of the Internship

Integrate and validate a Machine Learning solution for particle identification in the ePIC detector.

Why Machine Learning?

- Traditional reconstruction methods are not optimal for high-granularity data.
- BIC high-granularity data produces complex energy-deposition patterns beyond a simple ratio.
- Machine Learning can identify patterns in complex energy deposition profiles.
- CNNs can learn spatial correlations across layers and hits, capturing subtle shower shape differences.
- Improves accuracy in particle identification (PID), which is crucial for many physics analyses.

Application Area

Particle identification using calorimeter shower profiles in the ePIC Barrel Imaging Calorimeter.

Barrel Imaging Calorimeter (BIC)

- The BIC is part of the central calorimetry system of ePIC.
- Measures energy deposited by particles passing through.
- Electrons, pions, and photons leave distinct energy showers.
- Electrons generate compact and well-defined showers; pions show wider and less regular showers.

Physics Motivation

Electron/pion separation is critical in measurements like $\pi^0 \rightarrow \gamma\gamma$.

Machine Learning Pipeline

- We have divided our methodology into two steps: a classical cutoff using the E/p ratio and an ML cutoff using a CNN.
- Configuration:
 - Beam energy: $E_{\text{beam}} = 1.0 \text{ GeV}$
 - Polar angles $\theta = 45^\circ - 135^\circ$
- The objective is to have a total electron efficiency of 0.95 ($\varepsilon_e = 0.95$) and at the same time maximize pion rejection (R_π).

Total Efficiency and Rejection Definitions

$$\varepsilon_e = \frac{N_e^{\text{pass}}}{N_e^{\text{total}}}, \quad R_\pi = \frac{1}{\frac{N_\pi^{\text{pass}}}{N_\pi^{\text{total}}}} = \frac{N_\pi^{\text{total}}}{N_\pi^{\text{pass}}}$$

First cut: E/p Preselection

- We first exploit the classic calorimeter-to-track ratio $E/p = \frac{\sum_{i=1}^L E_{\text{SciFi}}(i)}{p_{\text{track}}}$.
- Physically:
 - Electrons shower electromagnetically \rightarrow deposit $E \approx p$.
 - Pions leave minimum-ionizing signal $\rightarrow E/p \ll 1$.
- We scan $L = 1 \dots 12$ SciFi layers, for each finding the E/p threshold that keeps 97
- We select the best separation between all layers based on the maximum pion rejection and use the E/p ratio to obtain the initial cutoff

Second cut: CNN Classifier

- At this point all events have already passed the E/p cut (keeps $\approx 97\%$ of electrons, rejects pions by $R_{\pi}^{E/p} \approx 23$).
- CNN's job consists of learning residual differences in shower shape to further separate electrons from pions.
- We must choose a CNN output threshold $P_{e^-}^{\text{cut}}$ such that

$$\varepsilon_{e^-}^{\text{tot}} = \varepsilon_{e^-}^{E/p} \times \varepsilon_{e^-}^{\text{ML}} \approx 0.95$$

(i.e. overall 95% electron efficiency).

- Our goal is to maximize the combined pion rejection $R_{\pi}^{\text{tot}} = R_{\pi}^{E/p} \times R_{\pi}^{\text{ML}}$ at this 95% efficiency.
- raw events \rightarrow [E/p pre-cut] \rightarrow [CNN classifier]

Total Efficiency and Rejection

$$\varepsilon_e^{\text{tot}} = \varepsilon_e^{E/p} \times \varepsilon_e^{\text{ML}}, \quad R_{\pi}^{\text{tot}} = R_{\pi}^{E/p} \times R_{\pi}^{\text{ML}}$$

Data & Features

- Data Loading:

hits.snappy.parquet \rightarrow tensor ($N_{\text{evt}}, N_{\text{layers}}, N_{\text{hits}}, N_{\text{feat}}=5$)

labels.snappy.parquet \rightarrow PDG codes $\rightarrow \{e^-, \pi^-\}$

- Preprocessing:

Reshape to [event, layer, hit, feature]

Map PDG codes to binary labels ($1=e^-, 0=\pi^-$)

Pion weight: $w_\pi = \min\left(\frac{N_e}{N_\pi} \times t_{\text{imb}}, w_\pi^{\text{max}}\right)$ with $t_{\text{imb}} = 0.1, w_\pi^{\text{max}} = 1.0$

Split train/val/test: 70 / 10 / 20

Data Features (per hit)

e_{norm} : hit energy fraction

r_{norm} : radial coordinate

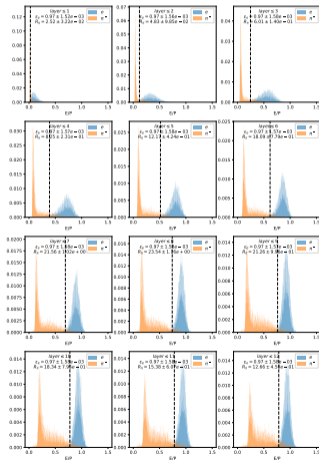
$\Delta\eta$ and $\Delta\phi$ from shower centroid

layer-type flag (Astropix or SciFi)

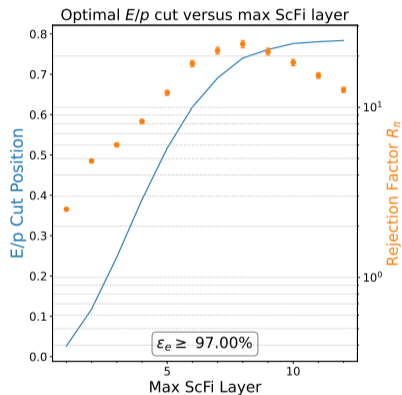
Model Architecture & Training

- Model (VGG-v2):
[Conv2D(64,3)×2 →MaxPool] →
[Conv2D(128,3)×3 →MaxPool] →Flatten→Dense(1024)×2 →Softmax(2)
- Training:
Adam(lr=1e-3), weighted sparse CCE; 30 epochs; batch 2000 (train) / 1000 (val)
- Evaluation:
Loss/Acc curves (→ ML_learning.pdf); test inference → ϵ_{ML} , $R_{\pi,ML}$; $P(e^-)$ histogram (→ ML_rejection.pdf)

E/p Layer Scan

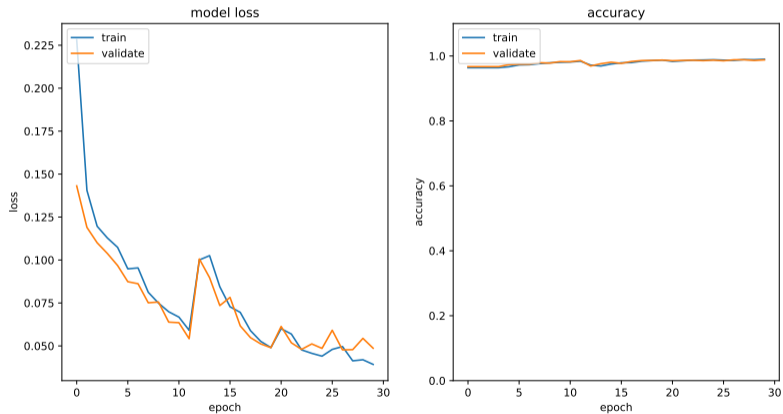


E/p Results

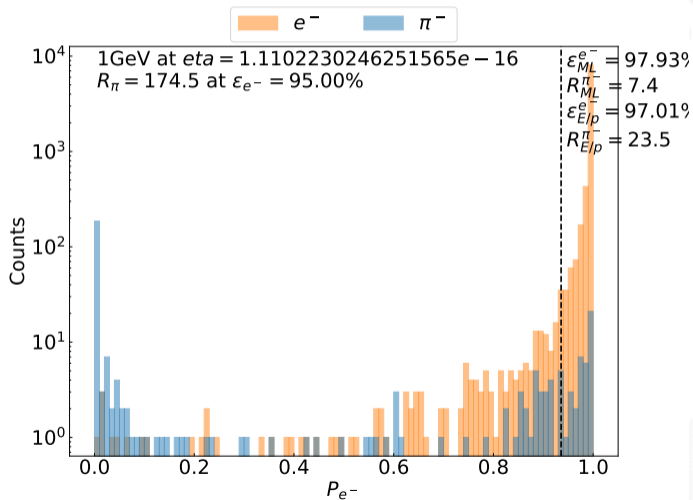


- Blue curve: chosen E/p threshold vs. max SciFi layer.
- Orange points (log-scale): pion-rejection factor R_π .
- Peak at layer 8 $E/p > 0.74$ maximizes R_π while keeping 97

Training Validation Curves



ML Rejection Histogram



EICrecon Integration

- Converting the keras model to an onnx model.
- Create C++ inference to integrate the E/p and ML algorithms properly into the EICrecon framework.
- Validation of the EICrecon inference algorithm using simulated data.

Output

A working and reproducible ML-based PID module for ePIC.

Expected Impact

- Improved particle identification in BIC.
- Application in analyses.
- Reusable training pipeline and inference module for future upgrades.

Scientific Output

- The project was presented orally at the 2025 EIC User Group Early Career Workshop.
- The project was presented at the EIC Manitoba meeting.

5TH ANNUAL
ELECTRON-ION
COLLIDER
USERS GROUP
EARLY CAREER
WORKSHOP

JULY 11-13, 2025

In cooperation with the
JOINT 2025 EICUG/ePIC
COLLABORATION
MEETING

THOMAS JEFFERSON NATIONAL ACCELERATOR
FACILITY (JEFFERSON LAB)
CEBAF Center, Newport News, Virginia, USA

WORKSHOP AIMS

- Provide a platform for early career researchers to connect and exchange knowledge
- Offer opportunities to present and discuss EIC physics, detectors, accelerator science, and software
- Highlight career paths in nuclear and hadronic physics
- Increase visibility of EIC-related contributions from early career researchers

Workshop will be available via Zoom for remote participants.

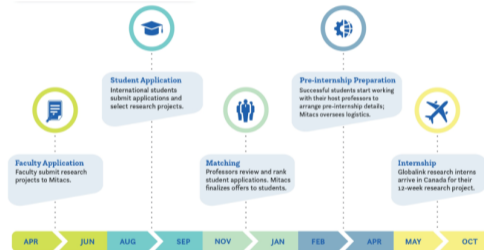
ORGANIZING COMMITTEE

Jennifer Rattenuous (West University of Texas, INFN Turin)
Wendang Shi (Illinois State University)
Henry Klot (Argonne National Laboratory)
Douglas Higginbotham (Jefferson Lab)

Jefferson Lab
Brookhaven National Laboratory
EIC

Address to the attendees by CFNS Director	Abhay Deshpande
	15:35 - 15:40
Machine Learning for Event Reconstruction at the Electron-Ion Collider (EIC)	Tomas Sosa Giraldo
	15:40 - 16:00
Status of the ePIC EEMCal Test Beam Analysis*	Tristan Protzner
	16:00 - 16:20
Energy Resolution Analysis for EIC's Barrel Imaging Calorimeter*	Maggie Kerr
	16:20 - 16:40
Signature of baryon Junctions in SIDIS	Dr. Hem Bhatt
	16:40 - 17:00
Early Career Panel Discussion (In person only)	
	17:00 - 18:00

Recommendations



Conclusions

- We demonstrated a two-step PID workflow in the ePIC Barrel Calorimeter:
 - An optimized E/p cut (8 SciFi layers, $E/p > 0.7403$) \rightarrow 97
 - A CNN-based secondary cut on shower “images” \rightarrow net 95
- Our 5-channel per-hit feature representation (e_{norm} , r_0 , $\Delta\eta$, $\Delta\phi$, layer-flag) successfully captures subtle EM vs. hadronic shower shapes.
- The VGG-v2 CNN learns layer-hit spatial correlations and boosts pion suppression by nearly an order of magnitude beyond E/p alone.

References

- <https://doi.org/10.1016/j.nuclphysa.2022.122447>
- https://eicweb.phy.anl.gov/Argonne_EIC/becal/ai-reconstruction

¡Thanks!

